

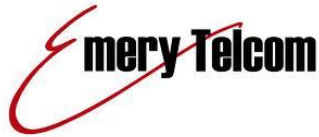
FHWA
Broadband Workshop
February 14, 2013



Facilitating Broadband

- Bring entities together in a single group

- Telecoms



- State Agencies

- UDOT – Utah Department of Transportation



- UEN – Utah Education Networks



- DTS – Division of Technology Services

- AGRC – Automated Geographic Reference Center

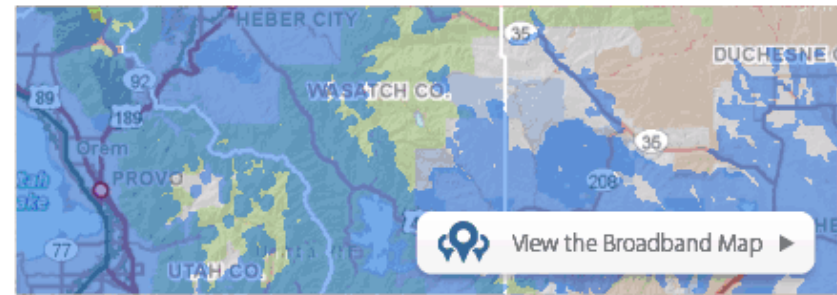
- GOED – Governor's Office of Economic Development





Creating New Opportunities by Expanding Broadband in Utah

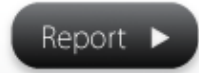
Welcome to The State of Utah's online home for the Utah Broadband Mapping, Analysis and Planning Project. Our team is working to identify areas that are unserved or underserved by broadband and formulate a comprehensive statewide plan to increase adoption and deployment in our state. This page will serve as the home for Utah's interactive broadband map, a forum for policy discussion surrounding broadband, as well as an informational and planning resource for state and local decision-makers, consumers and businesses interested in the future of broadband in Utah. **Utah's future.**




I have broadband.
Test my broadband connection speed.



I don't have broadband.
Let us know and we'll put it on the map.



 **Utah Broadband Advisory Council**
[Read More](#)

Broadband News & Updates

[WSJ: For the Internet-Deprived, McDonald's Serves...](#)
from Utah Broadband Project

[February 2013 Map of the Month: Broadband Speed and...](#)
from Utah Broadband Project

[Come see us at "Maps on the Hill" on 1-28-13](#)
from Utah Broadband Project

[Report Ranks Utah 8th Best Tech-Based Economy](#)
from Utah Broadband Project

[TechNet 2012 State Broadband Index](#)
from Utah Broadband Project

Minimizing Excavation

- **Coordination with the Telecoms**
 - Yearly planning meeting.
 - Single contact for the whole state.
 - Telecom wish list.
- **Know what facilities are available in the ROW to help direct inquires to the proper entities.**
 - Permits Office coordination
 - ROW Office coordination
 - Information availability is Key!!!!

Information on Projects

ArcGIS 2013 Workshop Map New Map My Content

Details Add Basemap Save Share Print Measure Bookmarks Find address

Contents

- MilePosts
- 2013 Workshop Projects (Unfunded)
- UDOT Projects (Funded)
- AADT History
- UDOT Pavement Data 2011
- CulvertsPoorCondition
- UDOT National Highway System
- UDOT Commission Districts
- UDOT Regions
- UtahBaseMap-Vector

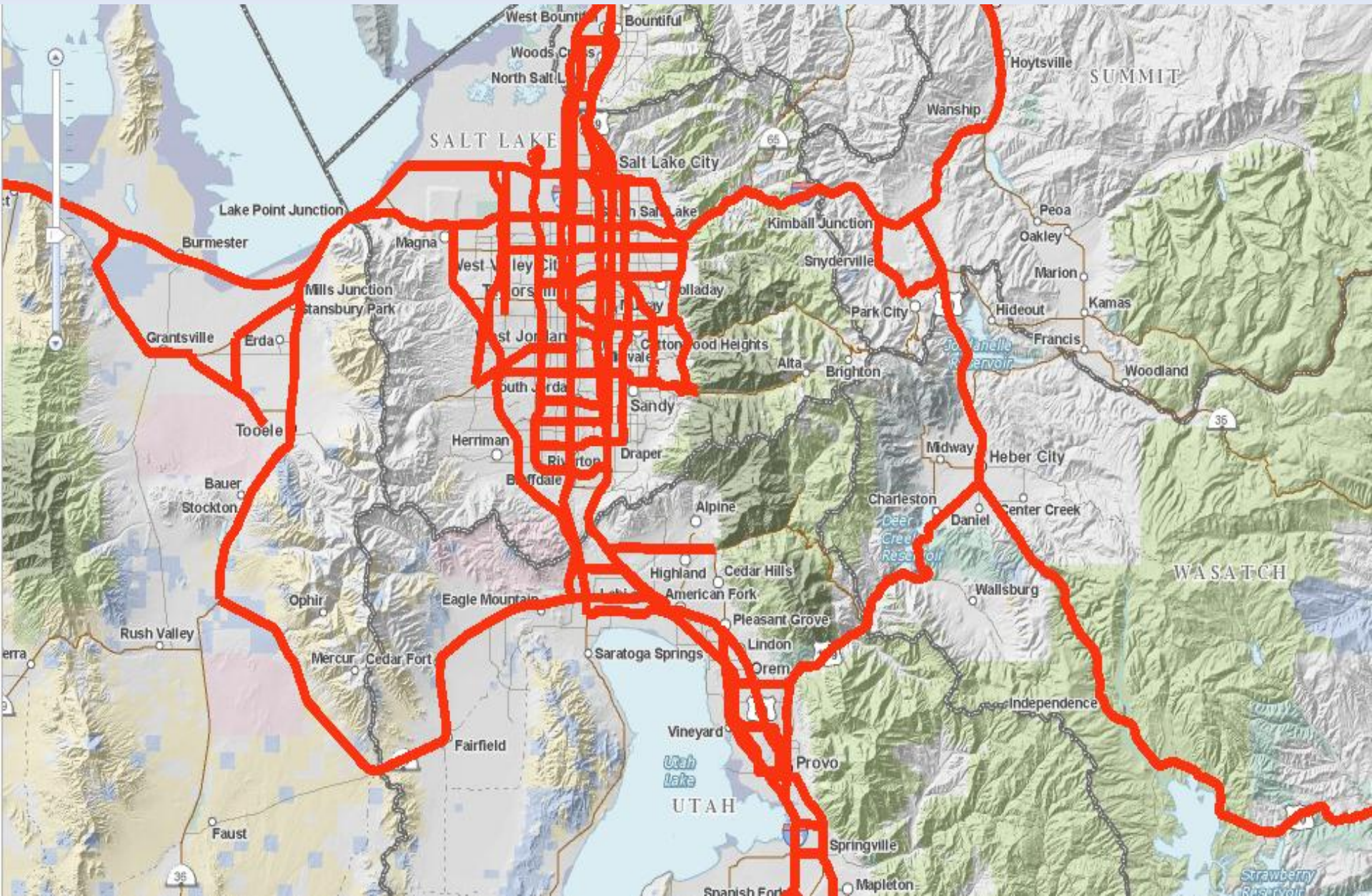
(1 of 5)

Preservation - In Design

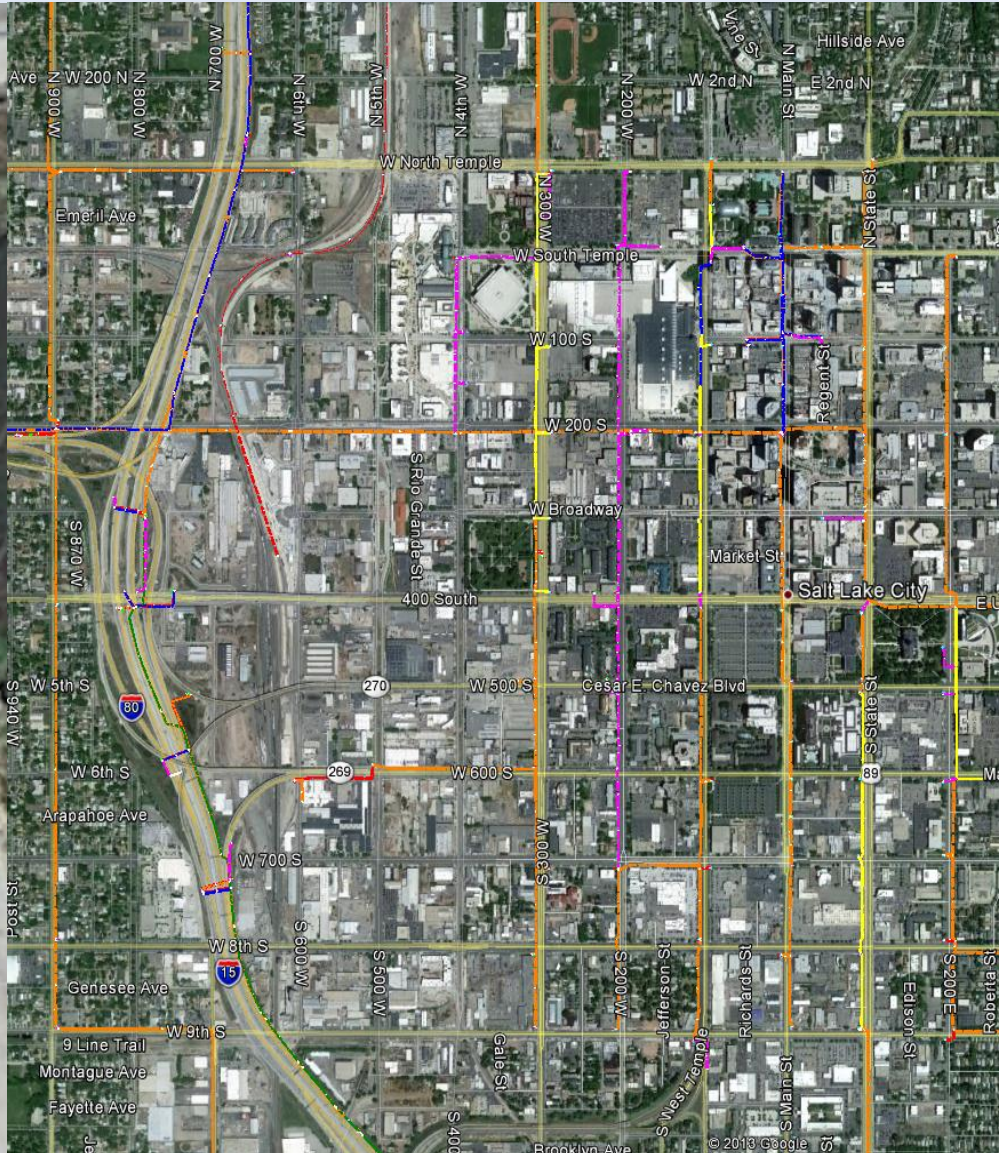
PIN	10087
MSTR_PIN	8071
PIN_STAT_NM	Active
PIN_DESC	I-80; Pipe Liner Replacement Various Locations
REGION_CD	2
PROJECT_MANAGER	LE-SPRADLIN, OANH AMBER
RESIDENT_ENGINEER	ACKERMANN, TRAVIS G
START_ACCUM	128.00
END_ACCUM	196.68
Zoom to	

<http://bit.ly/V9esCA>

Which Roads are UDOT's



Fiber and Conduit Locations



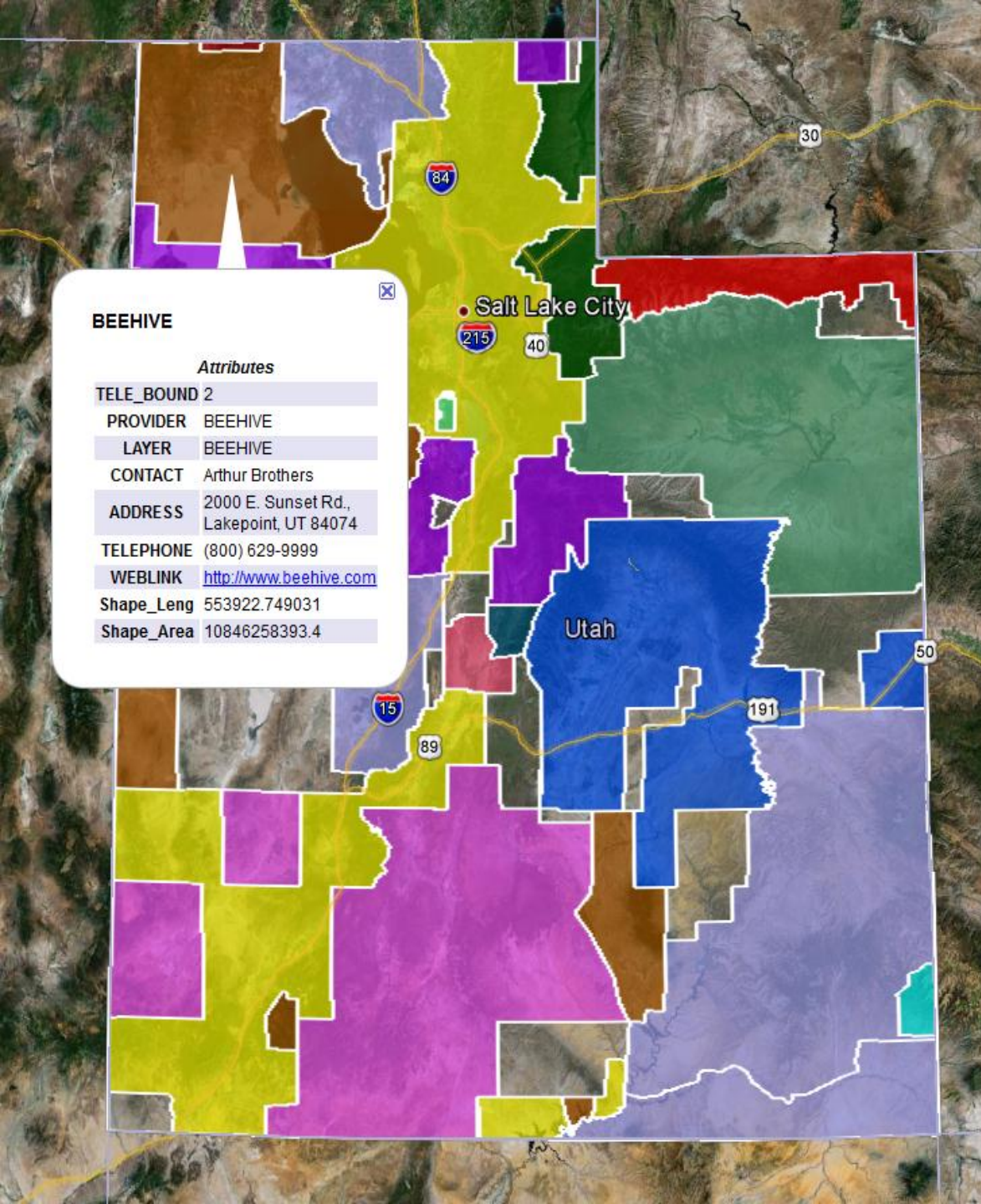
<ftp://168.178.125.70/tcudot/Fiber/KMLs/>

Know Your Telecoms Serving Areas

BEEHIVE

Attributes

TELE_BOUND 2	
PROVIDER	BEEHIVE
LAYER	BEEHIVE
CONTACT	Arthur Brothers
ADDRESS	2000 E. Sunset Rd., Lakepoint, UT 84074
TELEPHONE	(800) 629-9999
WEBLINK	http://www.beehive.com
Shape_Leng	553922.749031
Shape_Area	10846258393.4



Reducing Broadband Deployment Time

- Make access to the right of ways easier.
 - Cooperation between Federal and State Agencies
 - DOT's
 - Forest Service
 - BLM
 - School Land Trust
 - State Parks
 - National Parks
- Open up the ROW all the time.
 - No exclusive access to one company.

Underserved Areas Incentives

- If you build it they will come.
 - Examples
 - Scipio to Holden – CentraCom, Frontier
 - Logan – Syringa
 - Heber – AllWest
 - Big and Little Cottonwood Canyon - Crown Castle
- Help communities understand how to attract fiber telecom providers.
 - Let them use UDOT standards for construction.
 - Elkridge

Region 1 2006

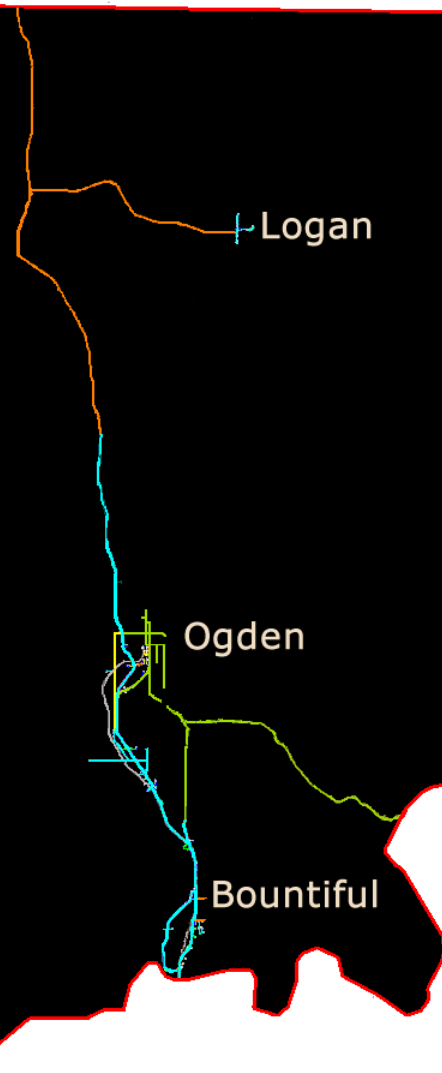
Logan

Ogden

Bountiful

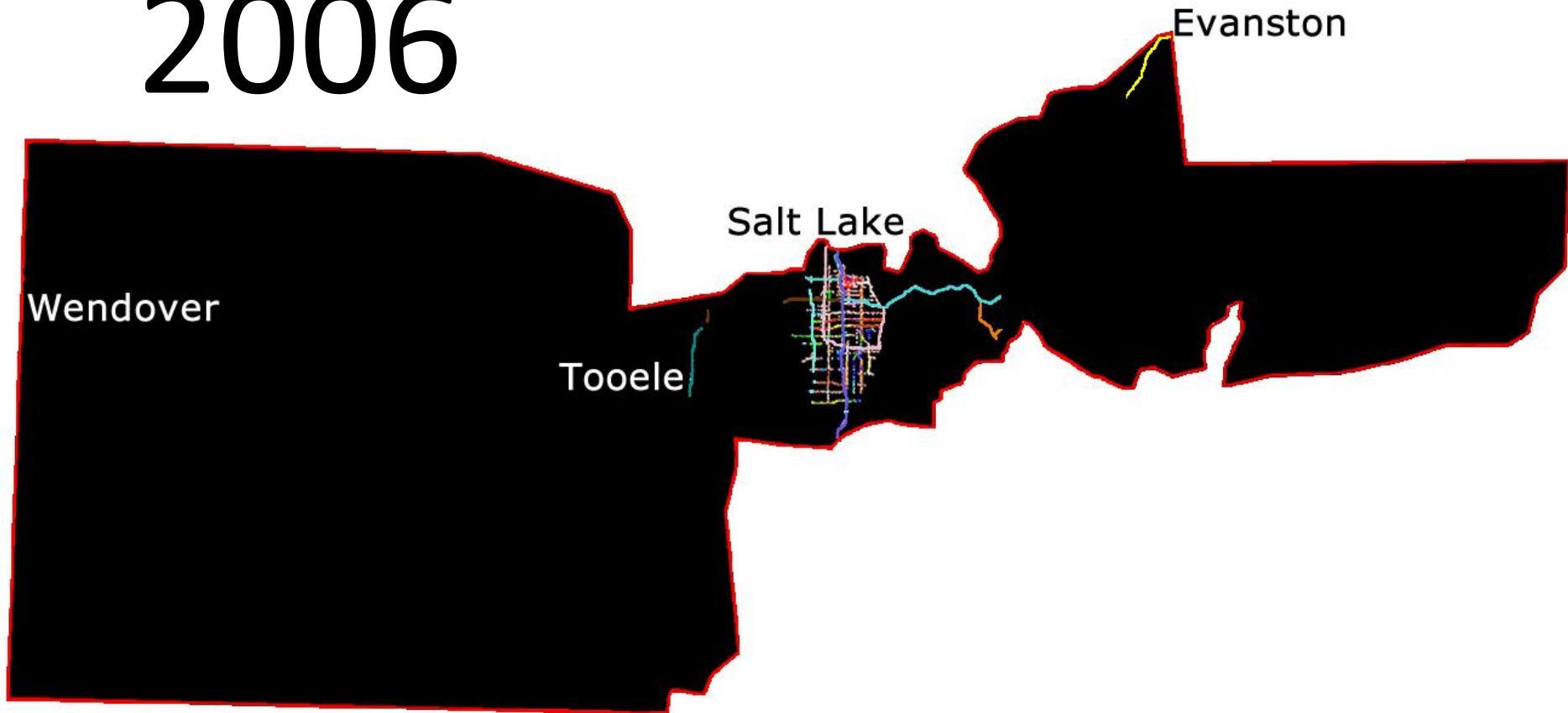


Region 1 2013



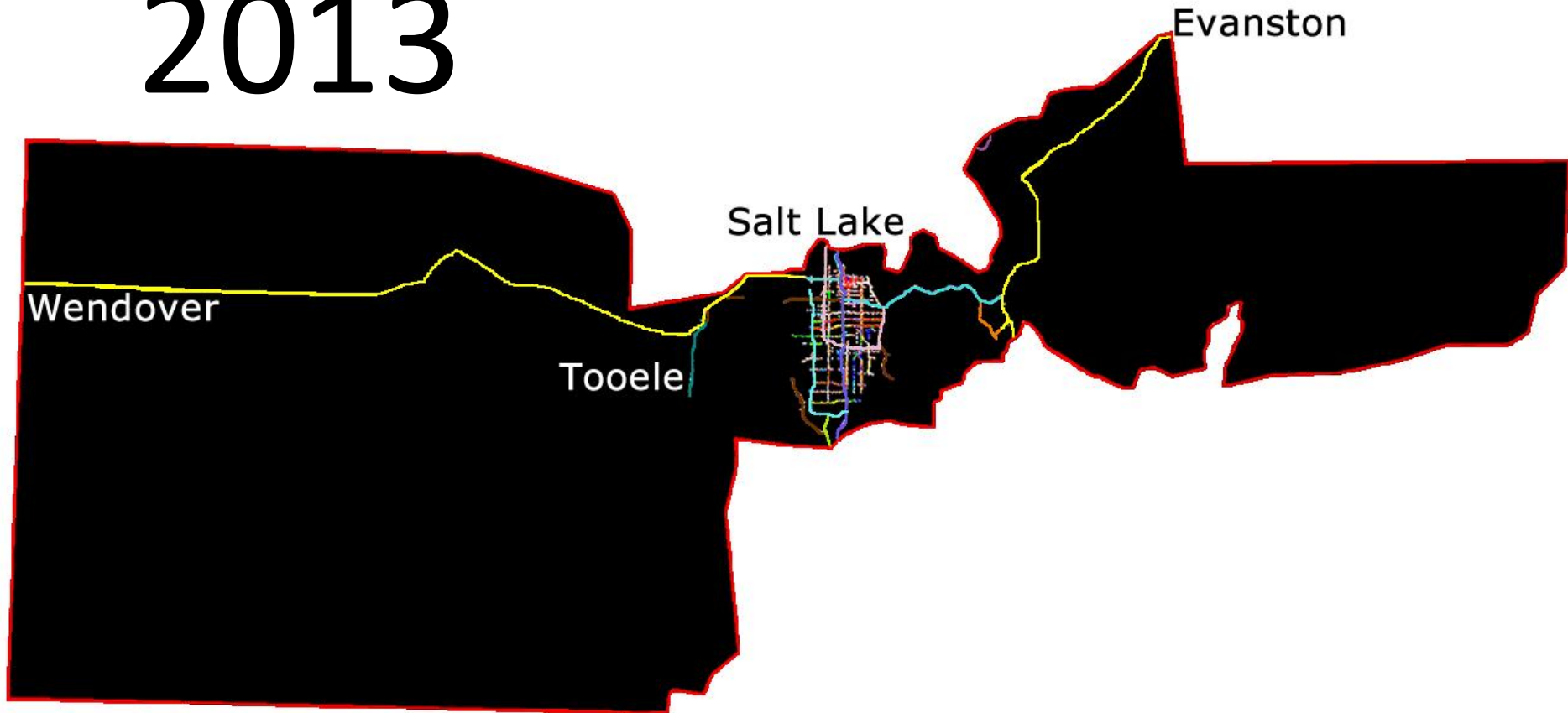
Region 2

2006



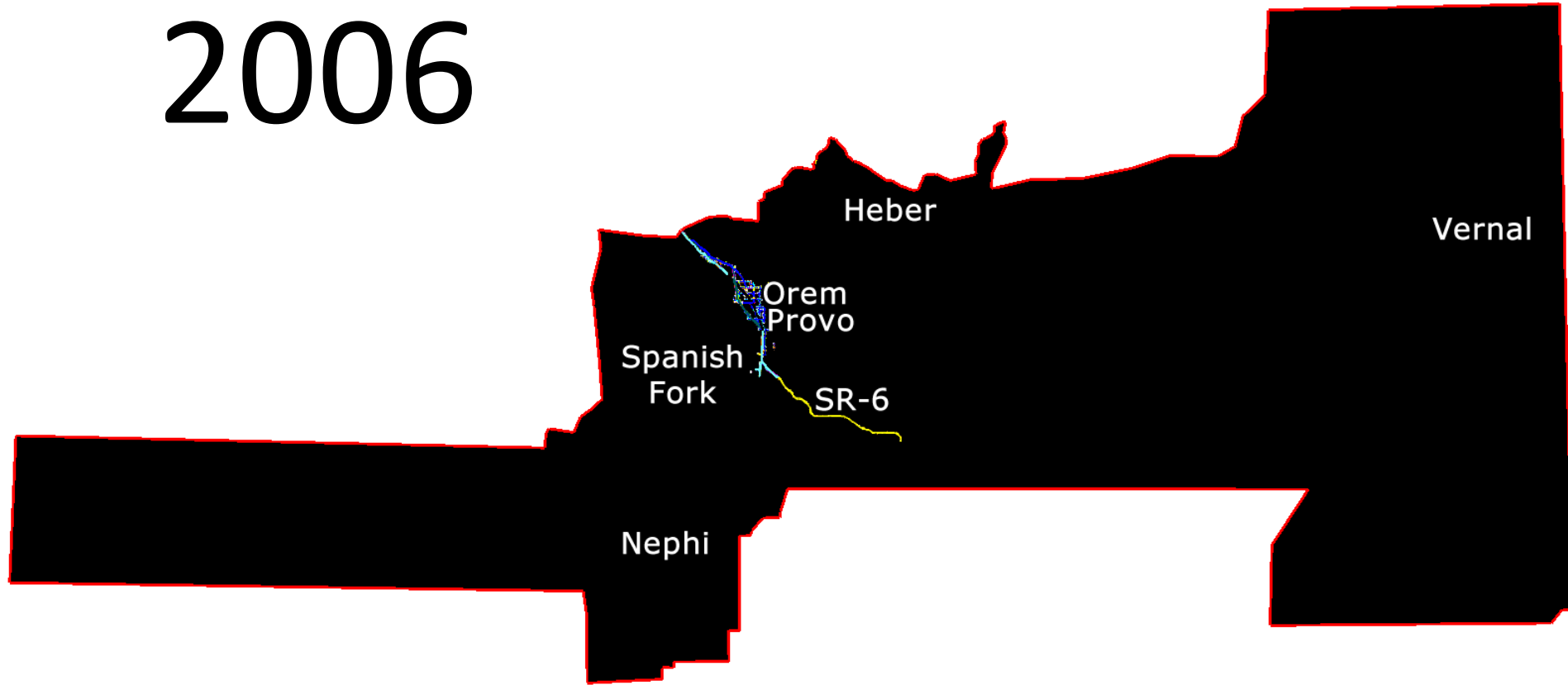
Region 2

2013



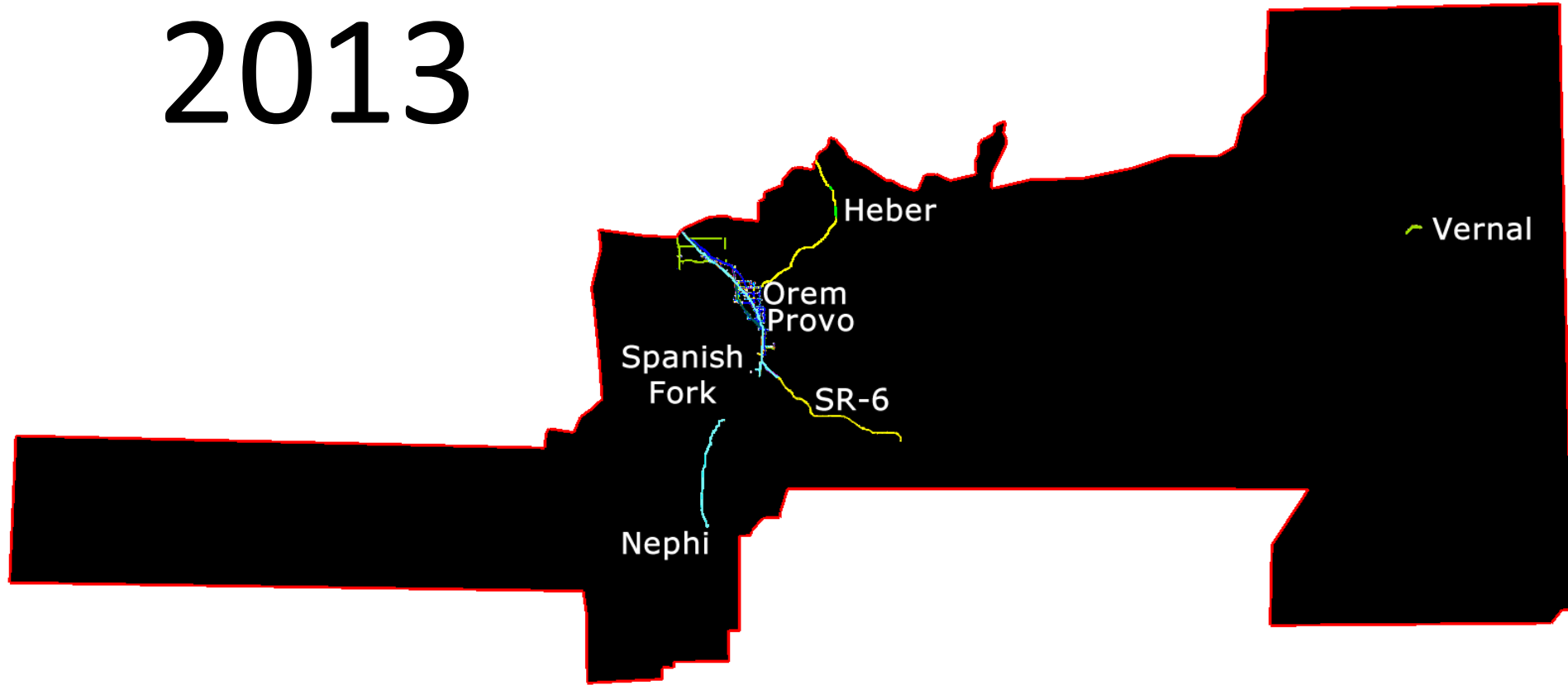
Region 3

2006



Region 3

2013



A red outline map of a region, likely in Utah, showing several locations. The locations are labeled with their names and a small colored icon: Helper (blue), Richfield (orange), Moab (yellow), Beaver (green), Cedar City (green), St. George (green), and Knab (green). The text 'Region 4 2006' is prominently displayed in the lower right area of the map.

Helper

Richfield

Moab

Beaver

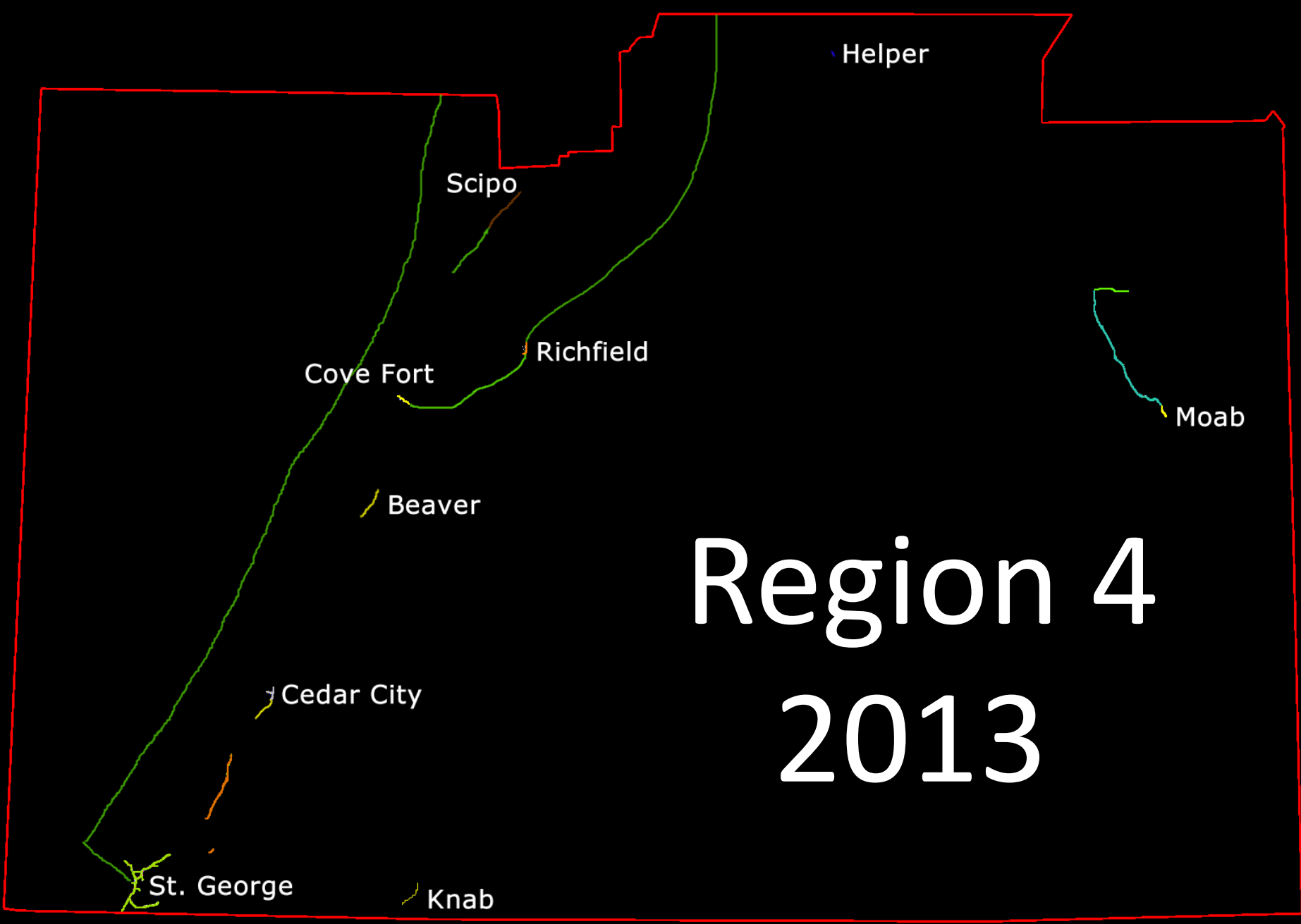
Region 4

Cedar City

2006

St. George

Knab



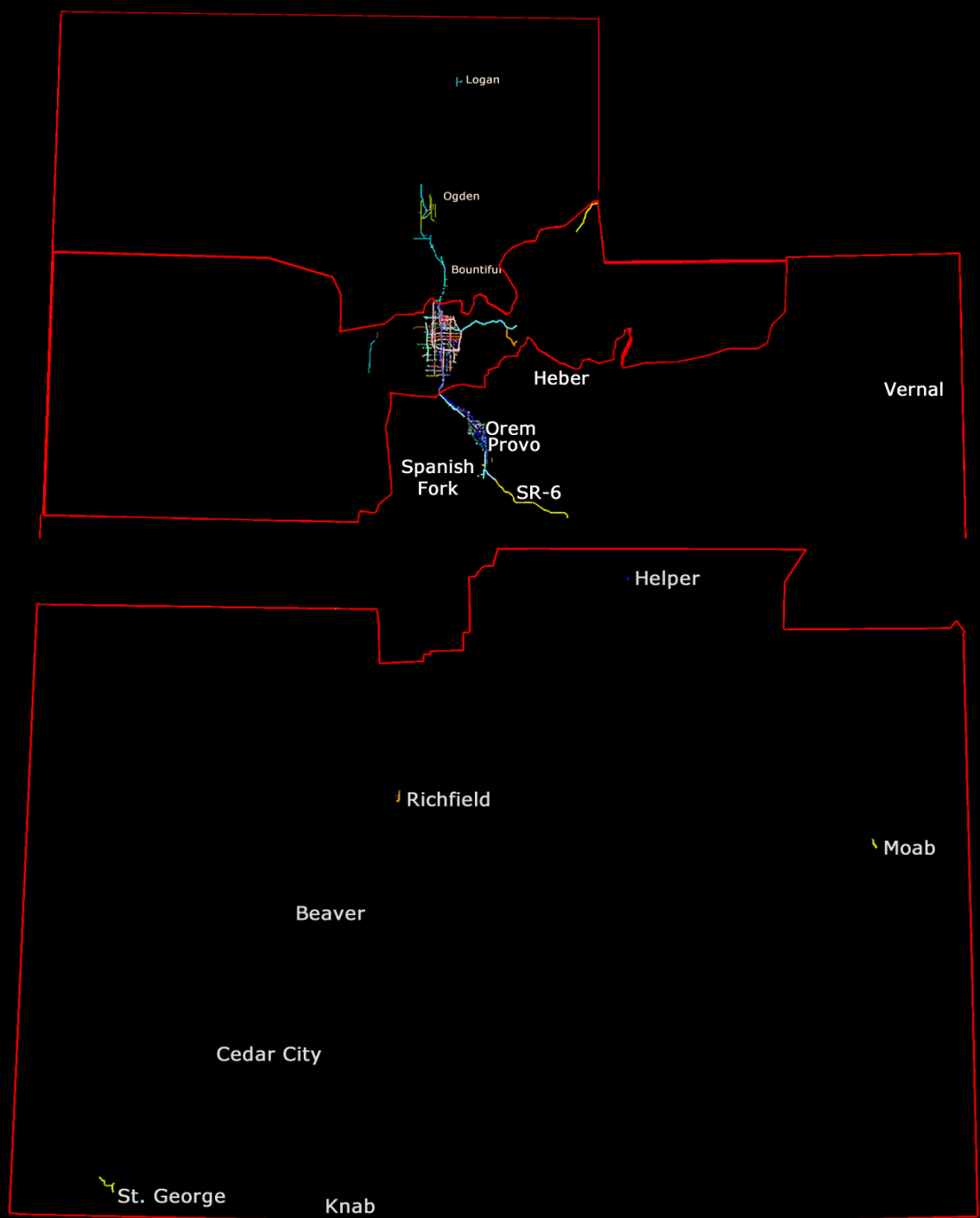
Region 4 2013

State 2006

UDOT

Fiber/Conduit 631
Miles Aprox.

Traded
Fiber/Conduit
Circuits
100 Miles Aprox.



State 2013

UDOT

Fiber/Conduit 900

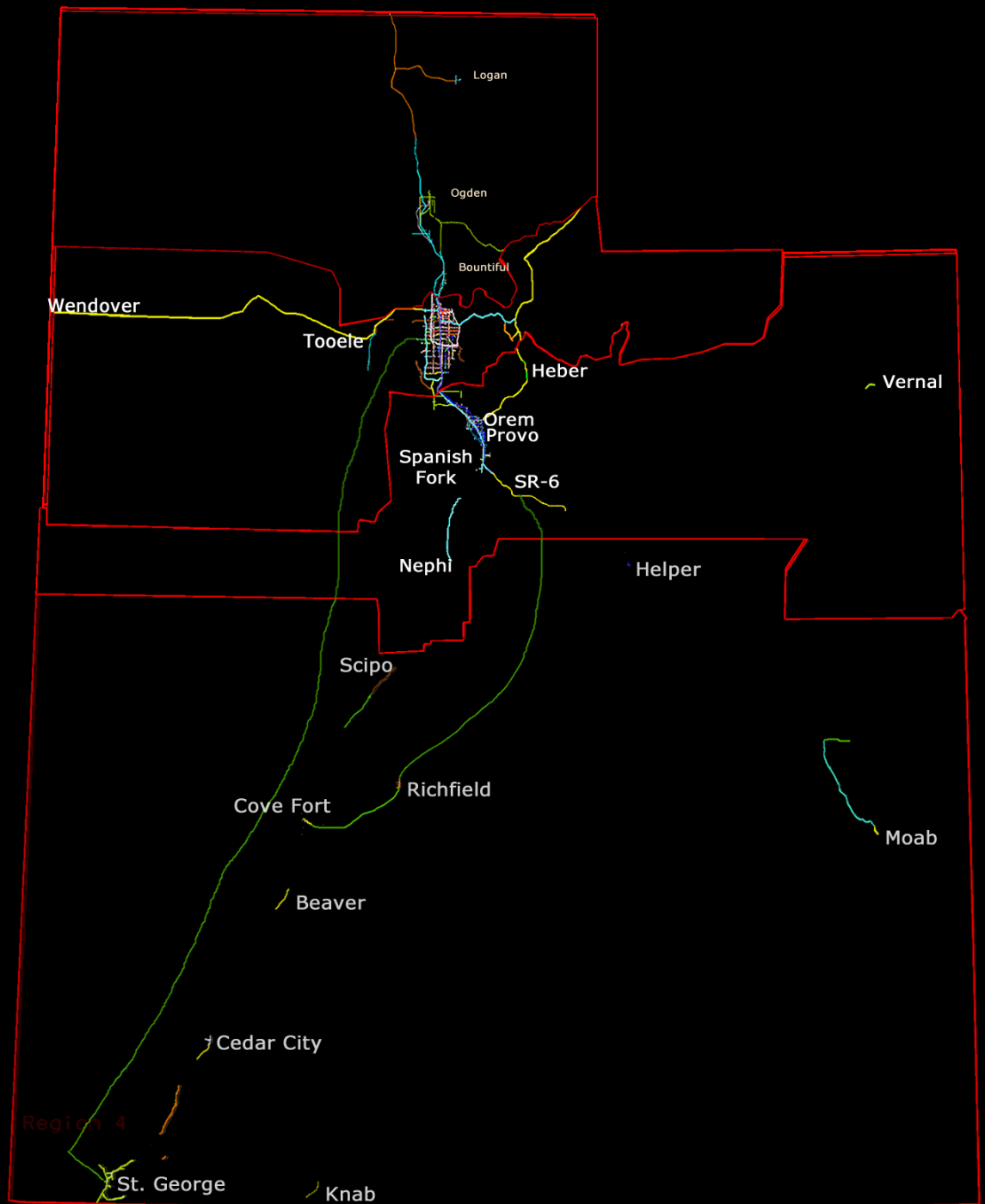
Miles Aprox.

Traded

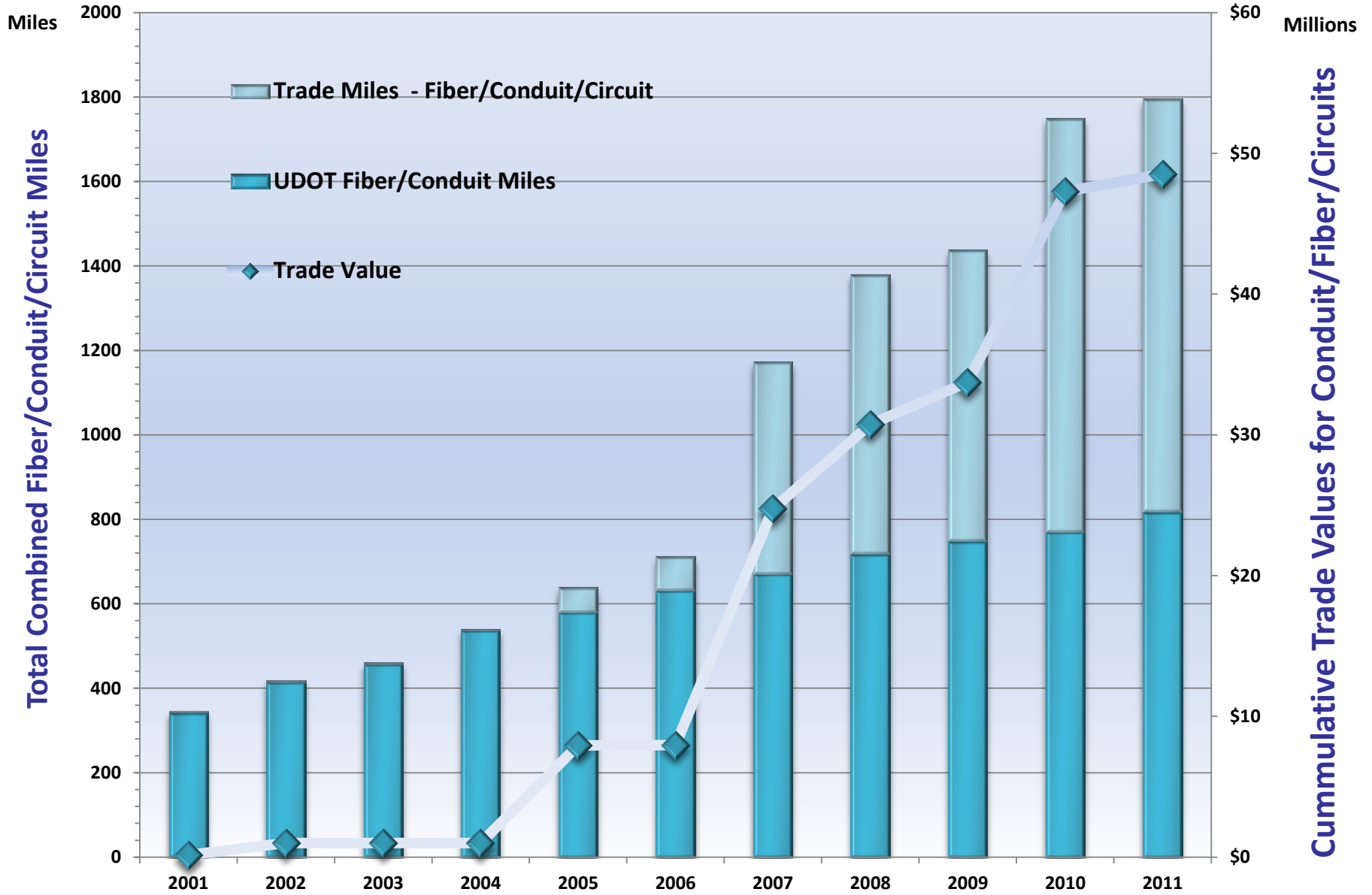
Fiber/Conduit

Circuits

1000 Miles Aprox.

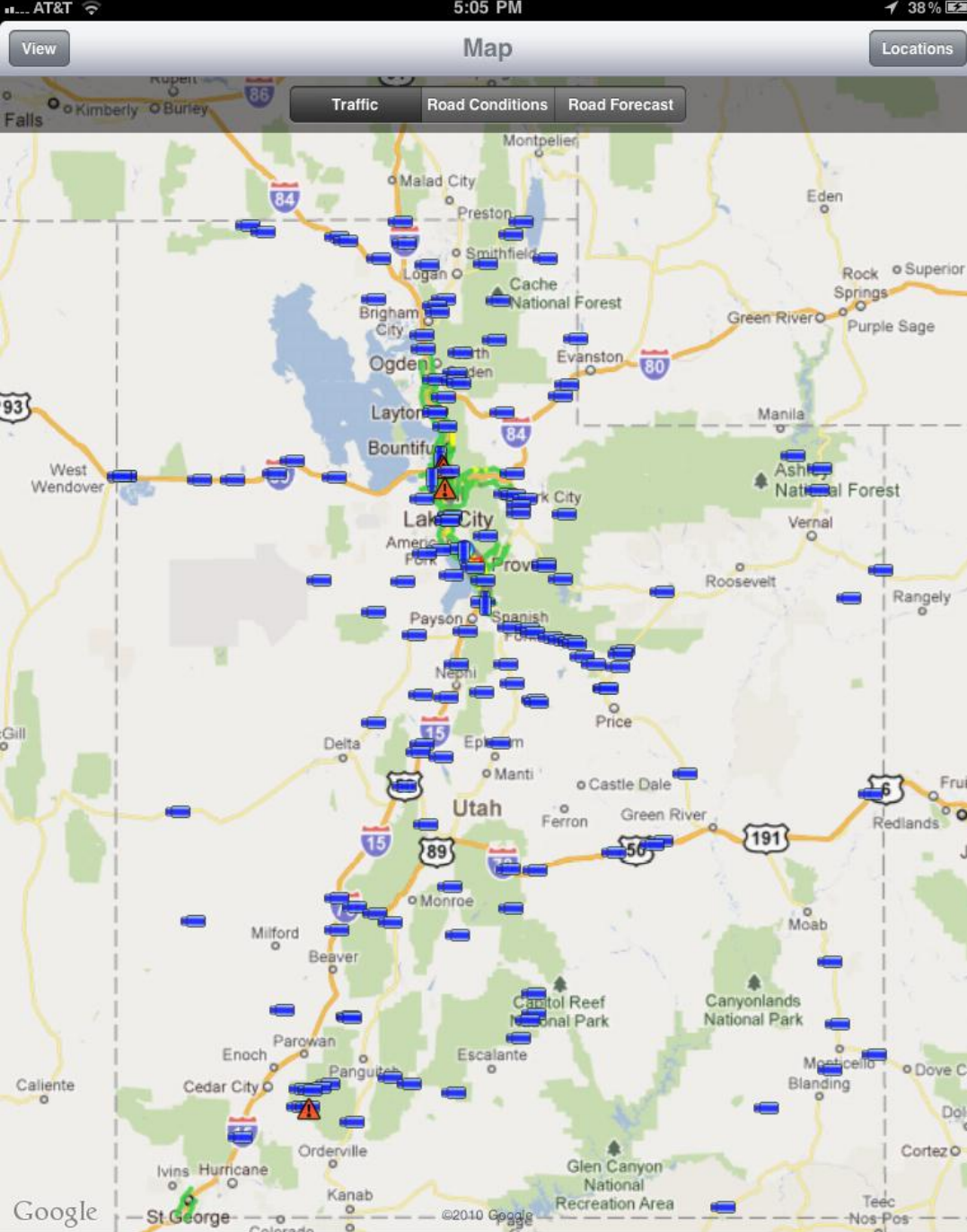


UDOT's Fiber Optic Network



Recommendations On Policies

- Utah State Rules and Policy on Longitudinal Access for Telecommunications
 - http://le.utah.gov/code/TITLE72/htm/72_07_010800.htm
 - http://le.utah.gov/code/TITLE72/htm/72_07_010900.htm
 - <http://www.rules.utah.gov/publicat/code/r907/r907-064.htm>
 - <http://www.rules.utah.gov/publicat/code/r907/r907-065.htm>
 - <http://www.rules.utah.gov/publicat/code/r930/r930-006.htm>
 - <http://www.rules.utah.gov/publicat/code/r930/r930-007.htm>
- Rules on how much monetary damage a telecom company can leverage against an entity that damages fiber optics. You want the fiber to be respected but not to the point it prohibits the desire to install it.
 - Ogden Canyon



Smart Phone Application

<http://udottraffic.utah.gov/mobile.aspx>

If you want to be incrementally better: Be competitive. If you want to be exponentially better: Be cooperative.

[Unknown Source](#)